



2005 CATERPILLAR 140H MOTOR GRADER | **Stock No.** 6/8631

**Make/Model** Caterpillar / 140H      **Condition** Used      **Location** Midland, WA  
**Hours** 17611      **Year** 2005      **Price** \$150,000 + GST

**Features** 17.5R25 Tyres, 5 Ripper Tynes, A/C ROPS Cabin, AM/FM Radio with USB, Battery Isolator, Beacon, Canvas Seat Cover, Diff Lock/Unlock, Fast Fill, Hi Vis Tape, Jump Start Receptacle, Pushblock, Side Shift, Starter Isolator, Tip Control, Topcon Wiring Only, Turbo Timer, Wheel Chocks



2006 CATERPILLAR 140H MOTOR GRADER | **Stock No.** 6/8644

**Make/Model** Caterpillar / 140H      **Condition** Used      **Location** Midland, WA  
**Hours** 16382      **Year** 2006      **Price** \$POA

**Features** A/C ROPS Cabin, Battery Isolator, E Stops, Fire Extinguisher, High Vis Tape, Jumpstart Receptacle, Push Block, Reverse Alarm, Starter Isolator, Tyre 17.5R25, UHF Radio, USB, Wheel Chocks, Wiring Only Topcon 2D

2010 CATERPILLAR 336DL HYDRAULIC EXCAVATOR | **Stock No.** 6/8666

**Make/Model** Caterpillar / 336DL      **Condition** Used      **Location** Midland, WA  
**Hours** 12612      **Year** 2010      **Price** \$68,500 + GST

**Features** A/C ROPS Cabin, Auxiliary Hydraulics, Battery Isolator, Beacon, E Stops, Fire Suppression, GP Bucket, Quick Hitch, Starter Isolator, UHF Radio



2012 CATERPILLAR D10T DOZER | **Stock No.** 6/8668

**Make/Model** Caterpillar / D10T      **Condition** Used      **Location** Midland, WA  
**Hours** N/A      **Year** 2012      **Price** \$725,000 + GST

**Features** 15,311 Frame Hours, A/C ROPS Cabin, Auto Lube, Blade Wear Package, E Stops, Fire Suppression, Fuel Fast Fill, Jump Start Receptacle, MS Ripper, SU Blade, SU Blade, Abrasion Package, UHF Radio and USB, Walkways with Hand Rails



2013 CATERPILLAR D10T DOZER | **Stock No.** 6/8539

**Make/Model** Caterpillar / D10T      **Condition** Used      **Location** Penrith, NSW  
**Hours** 12000      **Year** 2013      **Price** \$POA

**Features** MS Rear Ripper, Undercarriage - Fair

2014 ISUZU NPS 300 4X4 FIELD SERVICE TRUCK | **Stock No.** 6/8630

**Make/Model** Isuzu / NPS 300      **Condition** Used      **Location** Midland, WA  
**Hours** N/A      **Year** 2014      **Price** \$POA

**Features** 12 and 24V Jump Start Receptacle and Batteries, Bull Bar and spot lights, Driver and passenger suspension seat, Duel fuel tanks, Electric Start Diesel Compressor, Internal tool box and shelving on both sides, Powered Engel Fridge Mount, Rear access step, Remote Control Kevrek Crane, ROPS, Spare wheel mount with 2 spares

**WA Branch**

21 Military Road Midland WA 6056  
**Phone:** [1300 226 366](tel:1300226366)

**NSW Branch**

37 Jack Williams Drive Penrith NSW 2750  
**Phone:** [+61 429 084 569](tel:61429084569)


 2014 LIEBHERR LR634 CRAWLER LOADER | **Stock No.** 6/8611

<b>Make/Model</b> Liebherr / LR634	<b>Condition</b> Used	<b>Location</b> Penrith, NSW
<b>Hours</b> 7220	<b>Year</b> 2014	<b>Price</b> \$POA
<b>Features</b> A/C ROPS Cabin, Battery Isolation Switch, Beacon, E Stops, Multi-Purpose (4in1) Bucket – trash Rack), Reverse Alarm – Squawker, Serviced, Undercarriage – worn (sprocket 25-30%, chains & idlers), Work Lights, Work Ready		


 2015 CATERPILLAR 966M XE WHEEL LOADER | **Stock No.** 6/7867

<b>Make/Model</b> Caterpillar / 966M XE	<b>Condition</b> Used	<b>Location</b> Penrith, NSW
<b>Hours</b> 11105	<b>Year</b> 2015	<b>Price</b> \$POA
<b>Features</b> AC ROPS Cabin, Auto Lube, Battery Isolator, Beacon, E Stops, Fire Extinguishers, GP Bucket - Straight Edge, LED Lights, Reverse Camera, Ride Control, Road Fenders, Standard Lift, Supp Steering, Tier 4, UHF Radio		


 2015 CATERPILLAR 988K H/L WHEEL LOADER | **Stock No.** 6/988KHL

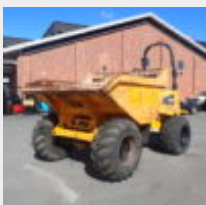
<b>Make/Model</b> Caterpillar / 988K H/L	<b>Condition</b> Used	<b>Location</b> Midland, WA
<b>Hours</b> 28801	<b>Year</b> 2015	<b>Price</b> \$595,000 + GST
<b>Features</b> 2015 Built/Delivered 2016, A/C ROPS Cabin, Auto Lube, Fire Suppression, Hand Rails, High Lift, Rebuilt Transmission and Torque Converter		


 2015 HITACHI ZX85USB-5A HYDRAULIC EXCAVATOR | **Stock No.** 6/8238

<b>Make/Model</b> Hitachi / ZX85USB-5A	<b>Condition</b> Used	<b>Location</b> Midland, WA
<b>Hours</b> 3944	<b>Year</b> 2015	<b>Price</b> \$POA
<b>Features</b> A/C ROPS Cabin, Auxiliary Hydraulics, Boom Check Valve, Push Blade, Quick Hitch, Reverse Camera, Stick Check Valve		


 2016 KOMATSU PC88MR-8 EXCAVATOR | **Stock No.** 6/8236

<b>Make/Model</b> Komatsu	<b>Condition</b> Used	<b>Location</b> Midland, WA
<b>Hours</b> 3461	<b>Year</b> 2016	<b>Price</b> \$77,500 + GST
<b>Features</b> Auxiliary Hydraulics, Hose Burst Protection Valves, Push Blade, Quick Hitch		


 2016 THWAITES 9T SITE DUMPER | **Stock No.** 6/8103

<b>Make/Model</b> Thwaites / 9T	<b>Condition</b> Used	<b>Location</b> Midland, WA
<b>Hours</b> 2200	<b>Year</b> 2016	<b>Price</b> \$POA
<b>Features</b> 4WD, 9,000KG Capacity, ROPS		

**WA Branch**

 21 Military Road Midland WA 6056  
**Phone:** [1300 226 366](tel:1300226366)
**NSW Branch**

 37 Jack Williams Drive Penrith NSW 2750  
**Phone:** [+61 429 084 569](tel:61429084569)


 2017 CATERPILLAR 990K WHEEL LOADER | **Stock No.** 6/8192

**Make/Model** Caterpillar / 990K      **Condition** Used      **Location** Penrith, NSW  
**Hours** 11670      **Year** 2017      **Price** \$POA  
**Features** A/C ROPS Cabin, GP Radio, Retarder, Ride Control, Rock Bucket, Secondary Steering, Tc, Td


 2018 KOMATSU PC138US-8 HYDRAULIC EXCAVATOR | **Stock No.** 6/8240

**Make/Model** Komatsu /      **Condition** Used      **Location** Midland, WA  
 PC138US-8  
**Hours** 3932      **Year** 2018      **Price** \$POA  
**Features** A/C ROPS Cabin, Auxiliary Hydraulics, Battery Isolator, Boom Check Valve, EStops, GP Bucket, Handrails, Push Blade, Quick Hitch, Reverse Camera, Stick Check Valve


 2018 KOMATSU PC138US-8 HYDRAULIC EXCAVATOR | **Stock No.** 6/8241

**Make/Model** Komatsu /      **Condition** Used      **Location** Midland, WA  
 PC138US-8  
**Hours** 3563      **Year** 2018      **Price** \$POA  
**Features** AC ROPS Cabin, Beacon, Boom Check Valve, GP Bucket, Handrails, Push Blade, Quick Hitch, Reverse Camera, Stick Check Valve


 2019 CATERPILLAR 980M WHEEL LOADER | **Stock No.** 6/8490

**Make/Model** Caterpillar / 980M      **Condition** Used      **Location** Midland, WA  
**Hours** 5055      **Year** 2019      **Price** \$POA  
**Features** 29.5R25 Tyres, A/C ROPS Cabin, Battery Isolator, Beacon, Joy Stick Control, Junpstart Receptable, Loadrite with Printer, Reverse Camera, Spade Nose Bucket 7.0m3 with BOE, Tier 4


 2020 VOLVO A40G ARTICULATED DUMP TRUCK | **Stock No.** 6/8500

**Make/Model** Volvo / A40G      **Condition** Used      **Location** Midland, WA  
**Hours** 4176      **Year** 2020      **Price** \$POA  
**Features** 29.5R25 Tyres, A/C ROPS Cabin, AdBlue, Battery Isolator, Beacon, E Stops, USB Radio, Wheel Chocks


 2020 VOLVO A40G ARTICULATED DUMP TRUCK | **Stock No.** 6/8501

**Make/Model** Volvo / A40G      **Condition** Used      **Location** Midland, WA  
**Hours** 3254      **Year** 2020      **Price** \$POA  
**Features** 29.5R25 Tyres, A/C ROPS Cabin, AdBlue, Battery Isolator, Beacon, E Stops, USB Radio, Wheel Chocks

**WA Branch**

 21 Military Road Midland WA 6056  
**Phone:** [1300 226 366](tel:1300226366)
**NSW Branch**

 37 Jack Williams Drive Penrith NSW 2750  
**Phone:** [+61 429 084 569](tel:61429084569)


 2021 VOLVO A40G ARTICULATED DUMP TRUCK | **Stock No.** 6/8503

<b>Make/Model</b> Volvo / A40G	<b>Condition</b> Used	<b>Location</b> Midland, WA
<b>Hours</b> 2786	<b>Year</b> 2021	<b>Price</b> \$POA
<b>Features</b> 29.5R25 Tyres, A/C ROPS Cabin, AdBlue, Battery Isolator, Beacon, E Stops, USB Radio, Wheel Chocks		


 2024 FWR TRI AXLE DROP DECK – 3.5M WIDENER | **Stock No.**

<b>Make/Model</b> FWR	<b>Condition</b> New	<b>Location</b> Midland, WA
<b>Hours</b> N/A	<b>Year</b> 2024	<b>Price</b> \$POA
<b>Features</b> 13x Polished Rims, 19.5" K Hitch - 8 Stud Axles, 1800 spread, 265/70/19.5 Triangle Tyres, 2Pak Paint, 2x Stainless Steel Toolboxes, 3 Rows of 4, Widening to 3.5 Metres, 4.2 Metre Top Deck – 10.1 Metre Bottom Deck, 700 Grade Plate SSAB, Container Pins, Dual King Pin, Fold Down Triangle Ramps to Top Deck, Front Drop in Headboard, Haldex GEN3 EBS, In Deck Tie Down Points, Jost Manual Legs, K Hitch Weweler Air Bag Suspension with Raise Lower Control Valve, Laser Cut Smooth Coaming Rails, Laser Wheel Alignment, Mega Pacific Hydraulic Power Pack, Oversize Flags with Holders, Oversize Signs, Polished Water Tank, Single Stage Ramps, Spare Wheel, Stainless Steel Chain Guards and Tie Rails		


 2024 FWR TRI AXLE TAG TRAILER | **Stock No.**

<b>Make/Model</b> FWR / Tri Axle Tag Trailer	<b>Condition</b> New	<b>Location</b> Midland, WA
<b>Hours</b> N/A	<b>Year</b> 2024	<b>Price</b> \$POA
<b>Features</b> 1m Beaver Tail, 28 Tonne ATM, 8m Deck, 900mm x 2800mm Hydraulic Ramps, Adjustable Tow Hitch (PINTLE), Black Powder Coated Toolbox: 1200(L) x 380(H) x 450(D) mm, Chain Locks in deck for tying off machines, Front Chain Locker Compartment, rubber lined (lockable), Full Strip of Rear Mudflaps, Hydraulic Front Leg, K-Hitch 20" Axles, K-Hitch Spring Suspension, Laser Wheel Alignment, LED Lighting, Polished Water Tank, Power Pack with battery system for operation of Hydraulics without truck (Century batteries Australian made), Pre-camber Chassis, Spare Wheel, Steel Rims, Tie Rail		

 2024 ISUZU FYH300/350 8x4 WATER TRUCK C/W AES 18000 WATER TANK | **Stock No.** 6/ISUZU18000LWT

<b>Make/Model</b> Isuzu / FYH300/350	<b>Condition</b> New	<b>Location</b> Midland, WA
<b>Hours</b> N/A	<b>Year</b> 2024	<b>Price</b> \$POA
<b>Features</b> 1 set of Wheel Chocks and 1 set of Reflective Triangles, 1 basic first aid kit, 2 x 9kg Fire Extinguishers, 3 x Magnum Fan Sprays, 80mm NB high lift water pump. Pressure outlets include a 25mm ball valve outlet for hose reel and 2" bsp ball valve, AES 18000 Water Truck Module c/w fully independent ROPS system designed and fabricated to ISO 3471 /3449 standards, Auto on Headlights, Canon, DG3 Hi Vis Tape Fitted to Tank and Cab, Dribble Bar, Emergency Stops Fitted 1 x inside and 1 x Drivers side external., Jump Start Receptacle, Nut Tags to be Fitted to all Wheel Nuts, Park Brake Door Alarm, Reverse Camera, Seat Covers, Starter & Battery Isolator, Supply & installation of a Hotshift PTO to suit a high lift water Pump. A Spin on type return line filter. A 200 litre oil tank will be integrated into the front left corner of the water tank., Top fill point funnel, drivers' side , site level gauges front and rear. Handrails around the top of the tank Fold down design for transport		

**WA Branch**

 21 Military Road Midland WA 6056  
**Phone:** [1300 226 366](tel:1300226366)
**NSW Branch**

 37 Jack Williams Drive Penrith NSW 2750  
**Phone:** [+61 429 084 569](tel:61429084569)



purposes, UHF Radio, Whip Aerial to 4.2m, Window Tint



2013 CATERPILLAR 329DL EXCAVATOR | **Stock No.** 6/7931

**Make/Model** Caterpillar / 329DL **Condition** Used  
**Hours** 10500 **Year** 2013

**Location** Penrith, NSW  
**Price** \$97,500 + GST

**Features** 1 x Mud Bucket, A/C ROPS Cabin, Auxilliary Piping, Battery Isolator, Beacon, Drop Valves, E Stops, FOPS Guard, Handrails, Quick Coupler, Reverse Camera, UHF Radio, Undercarriage - Fair, Work Lights



2017 CATERPILLAR 972M WHEEL LOADER | **Stock No.** 6/7929

**Make/Model** Caterpillar / 972M **Condition** Used  
**Hours** 8350 **Year** 2017

**Location** Penrith, NSW  
**Price** \$260,000 + GST

**Features** A/C ROPS Cabin, Auto Lube, Beacon, LED Lights, Material Handling Bucket - 5.0cum Straight Edge, Reverse Camera, Ride Control, Road Fenders, Scales & Printer, Supp Steering, Tier 4



2011 CATERPILLAR 336DL EXCAVATOR | **Stock No.** 6/7784

**Make/Model** Caterpillar / 336DL **Condition** Used  
**Hours** 13200 **Year** 2011

**Location** Penrith, NSW  
**Price** \$120,000 + GST

**Features** 1 x Excavation Bucket, A/C ROPS Cabin, AUX Piping, Battery Isolator, Beacon, Drop Valves, E Stops, FOPS Guard, Handrails, Loadrite Scales, Quick Coupler, Reverse Camera, Starter Isolator, UHF Radio, Undercarriage - Fair, Work Lights



2011 VOLVO A25F ARTICULATED DUMP TRUCK | **Stock No.** 6/8443

**Make/Model** Volvo / A25F **Condition** Used  
**Hours** 9450 **Year** 2011

**Location** Penrith, NSW  
**Price** \$POA

**Features** 1000hr service to be completed, A/C ROPS Cabin, Beacon, Reversing Camera, Tyres - Very Good



2012 CATERPILLAR D8T TRACK TYPE TRACTOR (DOZER) | **Stock No.** 6/7990

**Make/Model** Caterpillar / D8T **Condition** Used  
**Hours** 7342 **Year** 2012

**Location** Penrith, NSW  
**Price** \$550,000 + GST

**Features** 2 x Fire Extinguishers, 3 x E-Stops, A/C ROPS Cabin, ARO Ready, Battery Isolator, Beacon, Diff Steer, Multi Shank Rear Ripper, Starter Isolator, SU Blade - Single Tilt, UHF Radio

2014 CATERPILLAR 730C ARTICULATED DUMP TRUCK | **Stock No.** 6/8308

**Make/Model** Caterpillar / 730C **Condition** Used  
**Hours** 8993 **Year** 2014

**Location** Penrith, NSW  
**Price** \$320,000 + GST

**Features** A/Cond ROPS Cabin, Auto Lube, Floatation Tyres - Good, Reverse Camera, Tailgate, Tier 4

**WA Branch**

21 Military Road Midland WA 6056  
**Phone:** [1300 226 366](tel:1300226366)

**NSW Branch**

37 Jack Williams Drive Penrith NSW 2750  
**Phone:** [+61 429 084 569](tel:6161429084569)



2014 CATERPILLAR D6N LGP TRACK TYPE TRACTOR (DOZER) | **Stock No.** 6/8304



**Make/Model** Caterpillar / D6N      **Condition** Used      **Location** Penrith, NSW  
 LGP  
**Hours** 9485      **Year** 2014      **Price** \$150,000 + GST  
**Features** A/C ROPS Cabin, Accugrade Ready, Diff Steer, Drawbar, VPAT S Blade - Folding, Work Lights, Work Ready



2015 CATERPILLAR 745C ARTICULATED DUMP TRUCK | **Stock No.** 6/8289

**Make/Model** Caterpillar / 745C      **Condition** Used      **Location** Penrith, NSW  
**Hours** 9000      **Year** 2015      **Price** \$POA  
**Features** 1000Hrs Service to be Completed, 2 x Fire Extinguishers, 3 x E-Stops, A/C ROPS Cabin, Battery Isolator, Beacon, Reverse Camera, Starter Isolator, Tailgate, UHF Radio



2015 CATERPILLAR D6N LGP TRACK TYPE TRACTOR (DOZER) | **Stock No.** 6/8305

**Make/Model** Caterpillar / D6N      **Condition** Used      **Location** Penrith, NSW  
 LGP  
**Hours** 8145      **Year** 2015      **Price** \$165,000 + GST  
**Features** A/C ROPS Cabin, Accugrade Ready, Diff Steer, Drawbar, VPAT S Blade - Folding, Work Lights



2015 THWAITES 9T SITE DUMPER | **Stock No.** 6/8105

**Make/Model** Thwaites / 9T      **Condition** Used      **Location** Penrith, NSW  
**Hours** 3067      **Year** 2015      **Price** \$POA  
**Features** 4WD



2015 THWAITES 9T SITE DUMPER | **Stock No.** 6/8104

**Make/Model** Thwaites / 9T      **Condition** Used      **Location** Midland, WA  
**Hours** 2194      **Year** 2015      **Price** \$POA  
**Features** 4WD

**WA Branch**

21 Military Road Midland WA 6056  
**Phone:** [1300 226 366](tel:1300226366)

**NSW Branch**

37 Jack Williams Drive Penrith NSW 2750  
**Phone:** [+61 429 084 569](tel:61429084569)


 2016 CATERPILLAR 745C ARTICULATED DUMP TRUCK | **Stock No.** 6/8205

<b>Make/Model</b> Caterpillar / 745C	<b>Condition</b> Used	<b>Location</b> Penrith, NSW
<b>Hours</b> 9400	<b>Year</b> 2016	<b>Price</b> \$POA
<b>Features</b> 1000Hrs Service to be Completed, 2 x Fire Extinguishers, 3 x EStops, A/C ROPS Cabin, Battery Isolator, Beacon, Reverse Camera, Starter Isolator, Tailgate, Tyres - Very Good, UHF Radio		


 2016 HITACHI ZAXIS ZX200LC-5G HYDRAULIC EXCAVATOR | **Stock No.** 6/8456

<b>Make/Model</b> Hitachi / ZX200LC-5G	<b>Condition</b> Used	<b>Location</b> Midland, WA
<b>Hours</b> 6906	<b>Year</b> 2016	<b>Price</b> \$95,000 + GST
<b>Features</b> A/C ROPS Cabin, Auxiliary Hydraulics, Boom Check Valve, Front Window Guard, GP Bucket - Teeth, Handrails, Quick Hitch, Reverse Camera, Rotating Beacon, Stick Check Valve		


 2016 HITACHI ZAXIS ZX85USB-5A HYDRAULIC EXCAVATOR | **Stock No.** 6/8237

<b>Make/Model</b> Hitachi / ZX85USB-5A	<b>Condition</b> Used	<b>Location</b> Midland, WA
<b>Hours</b> 4945	<b>Year</b> 2016	<b>Price</b> \$POA
<b>Features</b> 4 Cylinder Hitachi Engine, A/C ROPS Cabin, Auxilliary Hydraulics, GP Bucket, Over Centre Valves, Quick Coupler		


 2016 KOMATSU PC138US-8 HYDRAULIC EXCAVATOR | **Stock No.** 6/8245

<b>Make/Model</b> Komatsu / PC138US-8	<b>Condition</b> Used	<b>Location</b> Midland, WA
<b>Hours</b> 3927	<b>Year</b> 2016	<b>Price</b> \$POA
<b>Features</b> A/C ROPS Cabin, Boom Check Valve, GP Bucket, Handrails, Quick Coupler, Reverse Camera, Rotating Beacon, Stick Check Valve		


 2016 THWAITES 9T SITE DUMPER | **Stock No.** 6/8107

<b>Make/Model</b> Thwaites / 9T	<b>Condition</b> Used	<b>Location</b> Penrith, NSW
<b>Hours</b> 1656	<b>Year</b> 2016	<b>Price</b> \$POA
<b>Features</b> 4WD		


 2017 CATERPILLAR 730C2 ARTICULATED DUMP TRUCK | **Stock No.** 6/8253

<b>Make/Model</b> Caterpillar / 730C2	<b>Condition</b> Used	<b>Location</b> Penrith, NSW
<b>Hours</b> 4595	<b>Year</b> 2017	<b>Price</b> \$435,000 + GST
<b>Features</b> A/C ROPS Cabin, Auto Lube, Reverse Camera, Tailgate, Tier 4		

**WA Branch**

 21 Military Road Midland WA 6056  
**Phone:** [1300 226 366](tel:1300226366)
**NSW Branch**

 37 Jack Williams Drive Penrith NSW 2750  
**Phone:** [+61 429 084 569](tel:61429084569)


 2017 JOHN DEERE 670GP MOTOR GRADER | **Stock No.** 6/8315

<b>Make/Model</b> John Deere / 670GP	<b>Condition</b> Used	<b>Location</b> Midland, WA
<b>Hours</b> 6195	<b>Year</b> 2017	<b>Price</b> \$275,000 + GST
<b>Features</b> 14 Ft Blade, A/C ROPS Cabin, Push Block, Reverse Camera, Rippers		


 2017 KOMATSU PC138US-8 HYDRAULIC EXCAVATOR | **Stock No.** 6/8244

<b>Make/Model</b> Komatsu / Hydraulic Excavator	<b>Condition</b> Used	<b>Location</b> Midland, WA
<b>Hours</b> 3842	<b>Year</b> 2017	<b>Price</b> \$155,000 + GST
<b>Features</b> A/C ROPS Cabin, Auxiliary Hydraulics, GP Bucket, Over Centre Valves, Push Blade, Quick Hitch, Reverse Camera, Steel Tracks		


 2017 KOMATSU PC138US-8 HYDRAULIC EXCAVATOR | **Stock No.** 6/8242

<b>Make/Model</b> Komatsu / PC138US-8	<b>Condition</b> Used	<b>Location</b> Midland, WA
<b>Hours</b> 3984	<b>Year</b> 2017	<b>Price</b> \$155,000 + GST
<b>Features</b> A/C ROPS Cabin, Auxiliary Hydraulics, GP Bucket, Over Centre Valves, Push Blade, Quick Hitch, Reverse Camera, Steel Tracks		


 2017 VOLVO A30G ARTICULATED DUMP TRUCK | **Stock No.** 6/8309

<b>Make/Model</b> Volvo / A30G	<b>Condition</b> Used	<b>Location</b> Penrith, NSW
<b>Hours</b> 5585	<b>Year</b> 2017	<b>Price</b> \$415,000 + GST
<b>Features</b> 2 x Fire Extinguishers, A/C ROPS Cabin, Beacon, Reverse Camera, Starter Isolator, Tailgate, Tyres - Fair		


 2018 CATERPILLAR 730 ARTICULATED DUMP TRUCK | **Stock No.** 6/8320

<b>Make/Model</b> Caterpillar / 730	<b>Condition</b> Used	<b>Location</b> Penrith, NSW
<b>Hours</b> 4846	<b>Year</b> 2018	<b>Price</b> \$POA
<b>Features</b> A/Cond ROPS Cabin, Auto Lube, Battery Isolator, Beacon, Fire Extinguishers, Floatation Tyres - Good, Reverse Camera, Serviced, Starter Isolator, Tailgate, UHF Radio		


 2018 CATERPILLAR 730C2 ARTICULATED DUMP TRUCK | **Stock No.** 6/8318

<b>Make/Model</b> Caterpillar / 730C2	<b>Condition</b> Used	<b>Location</b> Penrith, NSW
<b>Hours</b> 5029	<b>Year</b> 2018	<b>Price</b> \$POA
<b>Features</b> A/C ROPS Cabin, Auto Lube, Battery Isolator, Beacon, Fire Extinguishers, Floatation Tyres - Good, Reverse Camera, Serviced, Starter Isolator, Tailgate, UHF Radio		

**WA Branch**

 21 Military Road Midland WA 6056  
**Phone:** [1300 226 366](tel:1300226366)
**NSW Branch**

 37 Jack Williams Drive Penrith NSW 2750  
**Phone:** [+61 429 084 569](tel:+61429084569)



2018 CATERPILLAR 966M WHEEL LOADER | **Stock No.** 6/8477

<b>Make/Model</b> Caterpillar / 966M	<b>Condition</b> New	<b>Location</b> Midland, WA
<b>Hours</b> 8500	<b>Year</b> 2018	<b>Price</b> \$POA
<b>Features</b> A/C ROPS Cabin, Auto Lube, Coupler, Forks, GP Bucket - Straight Edge, LED Lighting, Loadmaster Scales and Printer, Reverse Camera, Ride Control, Road Fenders, Standard Lift, Supp Steering, Tier 4, Tyres - 70%		


 2018 HITACHI ZAXIS ZX85USB-5A HYDRAULIC EXCAVATOR | **Stock No.** 6/8234

<b>Make/Model</b> Hitachi / ZX85USB-5A	<b>Condition</b> Used	<b>Location</b> Midland, WA
<b>Hours</b> 3490	<b>Year</b> 2018	<b>Price</b> \$POA
<b>Features</b> 4 Cylinder Hitachi Engine, A/C ROPS Cabin, Auxilliary Hydraulics, GP Bucket, Over Centre Valves, Push Blade, Quick Coupler, Reverse Camera		


 2018 JCB 540-180 TELEHANDLER | **Stock No.** 6/8116

<b>Make/Model</b> JCB / 540-180	<b>Condition</b> Used	<b>Location</b> Penrith, NSW
<b>Hours</b> 3460	<b>Year</b> 2018	<b>Price</b> \$118,000 + GST
<b>Features</b> 13.3M Maximum Reach Forward, 17.5M Maximum Lift Height, 3 Steering Modes, 4,000kg Lift Capacity, 4WD, 550Kg Lift Capacity at Full Reach, A/C ROPS Cabin, Pallet Forks, Single Lever Joystick Control, Stabilisers		


 2018 KOMATSU GD655-5 MOTOR GRADER | **Stock No.** 6/8483

<b>Make/Model</b> Komatsu / GD655-5	<b>Condition</b> Used	<b>Location</b> Midland, WA
<b>Hours</b> 6357	<b>Year</b> 2018	<b>Price</b> \$245,000 + GST
<b>Features</b> 17.5R25 Tyres, A/C EROPS Cabin, Blade Lift Accumulators, Diff Lock/Unlock, Lighting, Pushblock, Reverse Camera, Ripper, Rotating Beacon, Side Shift, Slope Meter, Tip Control, Turbo Timer, UHF Radio		


 2018 KOMATSU WA470-8 WHEEL LOADER | **Stock No.** 6/8577

<b>Make/Model</b> Komatsu / WA470-8	<b>Condition</b> Used	<b>Location</b> Midland, WA
<b>Hours</b> 5870	<b>Year</b> 2018	<b>Price</b> \$397,500 + GST
<b>Features</b> A/C ROPS Cabin, Auto Lube, Battery Isolator, E Stops, GP Bucket with BOE, Handrails, Reverse Camera, Rotating Beacon, Turbo Timer, Tyres 26.5R25, UHF Radio		


 2019 CATERPILLAR 972M WHEEL LOADER | **Stock No.** 6/8204

<b>Make/Model</b> Caterpillar / 972M	<b>Condition</b> Used	<b>Location</b> Penrith, NSW
<b>Hours</b> 3402	<b>Year</b> 2019	<b>Price</b> \$POA
<b>Features</b> A/C ROPS Cabin, Auto Lube, Battery Isolators, Beacon, E Stops, LED Lights, New 29.5R25 Tyres, Ride Control, Road Fenders, Starter Isolator, Supp Steering, UHF Radio		

**WA Branch**

 21 Military Road Midland WA 6056  
**Phone:** [1300 226 366](tel:1300226366)
**NSW Branch**

 37 Jack Williams Drive Penrith NSW 2750  
**Phone:** [+61 429 084 569](tel:61429084569)


 2019 VOLVO A30G ARTICULATED DUMP TRUCK | **Stock No.** 6/8302

<b>Make/Model</b> Volvo / A30G	<b>Condition</b> Used	<b>Location</b> Penrith, NSW
<b>Hours</b> 4100	<b>Year</b> 2019	<b>Price</b> \$POA
<b>Features</b> A/C ROPS Cabin, Battery Isolator, Beacon, EStops, Fire Extinguishers, Reverse Camera, Starter Isolator, Tailgate, Tyres - Good, UHF Radio		


 2019 VOLVO EC950LE ME HYDRAULIC EXCAVATOR | **Stock No.** 6/8494

<b>Make/Model</b> Volvo / EC950EL ME	<b>Condition</b> Used	<b>Location</b> Midland, WA
<b>Hours</b> 8183	<b>Year</b> 2019	<b>Price</b> \$395,000 + GST
<b>Features</b> Auto Lube, Auxiliary Hydraulics, Fast Fill, Hand Rails, HD Rock Bucket, Isolators		


 2021 CATERPILLAR 980NG WHEEL LOADER | **Stock No.** 6/8198

<b>Make/Model</b> Caterpillar / 980NG	<b>Condition</b> Used	<b>Location</b> Midland, WA
<b>Hours</b> 2224	<b>Year</b> 2021	<b>Price</b> \$POA
<b>Features</b> 2V Hydraulics, A/C ROPS Cabin, Auto Lube, Bluetooth Radio, Joystick Steer, New GP Bucket, New Tyres 29.5R25, Reverse Camera, Ride Control, Secondary Steer, Standard Lift		


 2021 HITACHI ZX890LCH-6 HYDRAULIC EXCAVATOR | **Stock No.** 6/8182

<b>Make/Model</b> Hitachi / ZX890LCH-6	<b>Condition</b> Used	<b>Location</b> Midland, WA
<b>Hours</b> 4125	<b>Year</b> 2021	<b>Price</b> \$POA
<b>Features</b> 3.5CUM Rock Bucket, A/C ROPS Cabin, Boom 8.4m, Onboard Grease Pump & Hose Reel, Reverse Camera, Stick 3.7m		


 2021 HITACHI ZX890LCH-6 HYDRAULIC EXCAVATOR | **Stock No.** 6/8181

<b>Make/Model</b> Hitachi / ZX890LCH-6	<b>Condition</b> Used	<b>Location</b> Midland, WA
<b>Hours</b> 3866	<b>Year</b> 2021	<b>Price</b> \$POA
<b>Features</b> 3.5CUM Rock Bucket, A/C ROPS Cabin, Boom 8.4m, Onboard Grease Pump & Hose Reel, Reverse Camera, Stick 3.7m		


 2022 CATERPILLAR 980NG WHEEL LOADER | **Stock No.** 6/8197

<b>Make/Model</b> Caterpillar / 980	<b>Condition</b> Used	<b>Location</b> Midland, WA
<b>Hours</b> 2375	<b>Year</b> 2022	<b>Price</b> \$POA
<b>Features</b> A/C ROPS Cabin, Auto Lube, Battery Isolator, Beacon, E Stops, LED Lights, New 29.5R25 Tyres, New GP Bucket – 5.7cum straight edge, Ride Control, Road Fenders, Starter Isolator, Supp Steering, Tier 4 Final, UHF Radio		

**WA Branch**

 21 Military Road Midland WA 6056  
**Phone:** [1300 226 366](tel:1300226366)
**NSW Branch**

 37 Jack Williams Drive Penrith NSW 2750  
**Phone:** [+61 429 084 569](tel:61429084569)


 2023 DIFCO 15-20 ALL STAR EXCAVATOR BUCKET | **Stock No.** 6/8260

**Make/Model** All Star / 15-20  
 Excavator Bucket  
**Hours** N/A

**Condition** New  
**Year** 2023

**Location** Midland, WA  
**Price** \$39,750 + GST

 2023 DIFCO 2-3 ALL STAR SCREENING BUCKET TO SUIT 2-3T MINI EXCAVATOR | **Stock No.** 6/8263

**Make/Model** All Star / 2-3  
 Excavator Bucket  
**Hours** N/A

**Condition** New  
**Year** N/A

**Location** Midland, WA  
**Price** \$9,950 + GST

 2023 DIFCO 4-6 ALL STAR SCREENING BUCKET TO SUIT 4-6 T EXCAVATOR | **Stock No.** 6/8262

**Make/Model** All Star / 4-6  
 Excavator Bucket  
**Hours** N/A

**Condition** New  
**Year** 2023

**Location** Midland, WA  
**Price** \$15,500 + GST

 2023 DIFCO 7-10 ALL STAR EXCAVATOR BUCKET | **Stock No.** 6/8261

**Make/Model** All Star / 7-10  
 Excavator Bucket  
**Hours** N/A

**Condition** New  
**Year** N/A

**Location** Midland, WA  
**Price** \$19,900 + GST

 2023 DIFCO LD 5-8 ALL STAR LOADER BUCKET | **Stock No.** 6/8264

**Make/Model** All Star / LD 5-8  
 Loader Bucket  
**Hours** N/A

**Condition** New  
**Year** N/A

**Location** Midland, WA  
**Price** \$25,000 + GST

 2023 DIFCO LD3-4 ALL STAR SCREENING BUCKET TO SUIT 3-4 T WHEELED LOADERS, TRACKED SKIDSTEERS & TELEHANDLERS | **Stock No.** 6/8265

**Make/Model** All Star / LD 3-4  
 Loader Bucket  
**Hours** N/A

**Condition** New  
**Year** N/A

**Location** Midland, WA  
**Price** \$17,000 + GST

**WA Branch**

 21 Military Road Midland WA 6056  
**Phone:** [1300 226 366](tel:1300226366)
**NSW Branch**

 37 Jack Williams Drive Penrith NSW 2750  
**Phone:** [+61 429 084 569](tel:61429084569)


 2023 FUSO FGB71ER6SFBC 4X4 FIELD SERVICE TRUCK | **Stock No.** 6/8448

**Make/Model** Mitsubishi / Fuso  
 FGB71ER6SFBC  
**Hours** N/A

**Condition** New  
**Year** 2023

**Location** Midland, WA

**Price** \$167,500 + GST + ORC

 2023 REDLIFT CPCD30-XW33E-RT DIESEL ROUGH TERRAIN FORKLIFT | **Stock No.** 6/2WDRT

**Make/Model** Redlift /  
 CPCD30-XW33E-RT  
**Hours** 3

**Condition** Unused  
**Year** 2023

**Location** Midland, WA

**Price** \$38,500 + GST

**Features** 1220mm Length Forks, 2WD, 3.0m Duplex Mast, 3000KG Capacity, Automatic Transmission, Front Tyres 14-17.5, High exhaust and dual air filters, Japanese Yanmar NE98 Engine, LED Lamps & Warning Light, Rear Tyres 27x10-12, Side Shift, Suspension Seat

 1998 CATERPILLAR 769D OFF HIGHWAY WATER CART | **Stock No.** C/769D

**Make/Model** Caterpillar / 769D  
**Hours** 35894

**Condition** Used  
**Year** 1998

**Location** Midland, WA

**Price** \$150,000 + GST

**Features** 1x Side Spray, 3x Rear Sprays, A/C Cabin, Approx 35,000 Litre Tank, Automatic Transmission, Fire Suppression, Stalker Pump, Tyres 18.00R33

 2016 CATERPILLAR 980M WHEEL LOADER | **Stock No.** 6/7743

**Make/Model** Caterpillar / 980M  
**Hours** 11116

**Condition** Used  
**Year** 2016

**Location** Midland, WA

**Price** \$285,000 + GST

**Features** A/C ROPS Cabin, Auto Grease, Good 29.5R25 Tyres 50%, GP Bucket, Reverse Camera, Ride Control, Road Fenders

 2011 KOMATSU WA470-6 WHEEL LOADER | **Stock No.** 6/8074

**Make/Model** Komatsu /  
 WA470-6  
**Hours** 11100

**Condition** Used  
**Year** 2011

**Location** Midland, WA

**Price** \$155,000 + GST

**Features** 26.5R25 Tyres, Auto Lube, E Stops, GP Bucket, Rear View Camera, UHF Radio

 2016 HITACHI ZX470H-5B HYDRAULIC EXCAVATOR | **Stock No.** 6/8128

**Make/Model** Hitachi /  
 ZX470H-5B  
**Hours** 3110

**Condition** Used  
**Year** 2016

**Location** Penrith, NSW

**Price** \$295,000 + GST

**Features** A/C ROPS Cabin, AUX Piping, Beacon, FOPS, Front Window Guard, GP Bucket, Reverse

**WA Branch**

 21 Military Road Midland WA 6056  
**Phone:** [1300 226 366](tel:1300226366)
**NSW Branch**

 37 Jack Williams Drive Penrith NSW 2750  
**Phone:** [+61 429 084 569](tel:61429084569)





Camera


 2013 HYUNDAI ROBEX 55-9 EXCAVATOR | **Stock No.** 6/8027

<b>Make/Model</b> Hyundai / Robex 55-9	<b>Condition</b> Used	<b>Location</b> Midland, WA
<b>Hours</b> 3841	<b>Year</b> 2013	<b>Price</b> \$47,500 + GST
<b>Features</b> A/C Cabin, GP Bucket, Hydraulic Quick Hitch, Push Blade, Rubber Tracks, Swivel Boom		


 2013 VOLVO ECR88 PLUS HYDRAULIC EXCAVATOR | **Stock No.** 6/8026

<b>Make/Model</b> Volvo	<b>Condition</b> Used	<b>Location</b> Midland, WA
<b>Hours</b> 5141	<b>Year</b> 2013	<b>Price</b> \$49,000 + GST
<b>Features</b> A/C Cabin, Auxiliary Hydraulic, Bucket, Hydraulic Quick Hitch, Over Centre Valves, Push Blade, Rotating Beacon, Rubber Tracks		


 2017 CATERPILLAR 980M WHEEL LOADER | **Stock No.** 6/7781

<b>Make/Model</b> Caterpillar / 980M	<b>Condition</b> Used	<b>Location</b> Penrith, NSW
<b>Hours</b> 11950	<b>Year</b> 2017	<b>Price</b> \$325,000 + GST
<b>Features</b> A/C ROPS Cabin, Auto Lube, Battery Isolator, Beacon, E Stops, Fire Extinguisher, GP Bucket - 5.0CUM Straight Edge, LED Lights, Loadmaster, Reverse Camera, Ride Control, Road Fenders, Standard Lift, Starter Isolator, Tier 4, UHF Radio, Work Ready		


 2014 CATERPILLAR 980H WHEEL LOADER | **Stock No.** 6/7880

<b>Make/Model</b> Caterpillar / 980H	<b>Condition</b> Used	<b>Location</b> Midland, WA
<b>Hours</b> 10600	<b>Year</b> 2014	<b>Price</b> \$225,000 + GST
<b>Features</b> EStops, Isolators, Loadrite with Printer, Reverse Camera, UHF Radio		


 2015 CATERPILLAR 980M WHEEL LOADER | **Stock No.** 6/7873

<b>Make/Model</b> Caterpillar / 980M	<b>Condition</b> Used	<b>Location</b> Penrith, NSW
<b>Hours</b> 11710	<b>Year</b> 2015	<b>Price</b> \$295,000 + GST
<b>Features</b> A/C ROPS Cabin, Auto Lube, Battery Isolator, Beacon, Cat Payload System, E-Stop, GP Bucket – straight edge to GP Bucket – teeth, LED Lights, Ride Control, Road Fenders, Standard Lift, Starter Isolator, Supp Steering, Tyres - Better than 50%, UHF Radio, Work Ready		

**WA Branch**

 21 Military Road Midland WA 6056  
**Phone:** [1300 226 366](tel:1300226366)
**NSW Branch**

 37 Jack Williams Drive Penrith NSW 2750  
**Phone:** [+61 429 084 569](tel:61429084569)


 2016 HITACHI ZX470H-5B EXCAVATOR | **Stock No.** 6/8131

<b>Make/Model</b> Hitachi / ZX470H-5B	<b>Condition</b> Used	<b>Location</b> Penrith, NSW
<b>Hours</b> 6549	<b>Year</b> 2016	<b>Price</b> \$250,000 + GST
<b>Features</b> A/Cond ROPS Cabin, AUX Piping, Beacon, FOPS Cabin Guard, Handrails, Reverse Camera, Undercarriage – better than 50%		


 2017 CATERPILLAR 980M WHEEL LOADER | **Stock No.** 6/7874

<b>Make/Model</b> Caterpillar / 980M	<b>Condition</b> Used	<b>Location</b> Penrith, NSW
<b>Hours</b> 9560	<b>Year</b> 2017	<b>Price</b> \$315,000 + GST
<b>Features</b> A/C ROPS Cabin, Auto Lube, Battery Isolator, Beacon, EStops, Fire Extinguishers, GP Bucket - Straight Edge, LED Lights, Reverse Camera, Ride Control, Road Fenders, Standard Lift, Starter Isolator, Supp Steering, Tier 4, Tyres - Better than 50%, UHF Radio, Work Ready		


 2020 KOMATSU WA380-8 WHEEL LOADER | **Stock No.** 6/8069

<b>Make/Model</b> Komatsu / WA380-8	<b>Condition</b> Used	<b>Location</b> Penrith, NSW
<b>Hours</b> 1605	<b>Year</b> 2020	<b>Price</b> \$260,000 + GST
<b>Features</b> A/Cond ROPS Cabin, Beacon, GP Bucket - Straight Edge, Reverse Camera, Road Fenders, Work Lights		


 2020 PARK MOTOR BODYBUILDERS TANDEM AXLE PLANT TRAILER | **Stock No.** 6/8250

<b>Make/Model</b> Park Motor Body Builders / Tandem Axle Plant Trailer	<b>Condition</b> Used	<b>Location</b> Midland, WA
<b>Hours</b> N/A	<b>Year</b> 2020	<b>Price</b> \$17,500 + GST
<b>Features</b> 12V Electric Hydraulic Ramps, 50mm Ball Hitch, Approx 6200mm x 2450mm Tray, Attachment Racks, Breakaway System, Leaf Spring Attachment		


 2018 CATERPILLAR 950M WHEEL LOADER | **Stock No.** 6/7957

<b>Make/Model</b> Caterpillar / 950M	<b>Condition</b> Used	<b>Location</b> Penrith, NSW
<b>Hours</b> 6845	<b>Year</b> 2018	<b>Price</b> \$235,000 + GST
<b>Features</b> 3rd Valve, A/C ROPS Cabin with Guards, Auto Lube, Beacon, Grapple Bucket, LED Lights, New Tyres, Rear Guard, Reverse Camera, Ride Control, Road Fenders, Supp Steering, Tier 4		


 UNUSED 2022 CASE IH FARMALL JX110 FRONT WHEEL ASSIST UTILITY TRACTOR | **Stock No.** 6/CASE22WA

<b>Make/Model</b> CASE IH	<b>Condition</b> Unused	<b>Location</b> Midland, WA
<b>Hours</b> 1	<b>Year</b> 2022	<b>Price</b> \$82,500 + GST
<b>Features</b> 3 Point Linkage, 3 x Remotes, 4 Cylinder Turbo Engine, A/C Cabin, Drawbar, Front Tyres 340/85R28, PTO, Rear Tyres 420/85R38, Trima X4S Loader Frame Fitted		

**WA Branch**

 21 Military Road Midland WA 6056  
**Phone:** [1300 226 366](tel:1300226366)
**NSW Branch**

 37 Jack Williams Drive Penrith NSW 2750  
**Phone:** [+61 429 084 569](tel:6161429084569)



UNUSED 2023 CASE IH FARMALL JX110 FRONT WHEEL ASSIST UTILITY TRACTOR | **Stock No.** 6/CASE23WA

**Make/Model** CASE IH / JX110      **Condition** Unused      **Location** Midland, WA  
**Hours** 1      **Year** 2023      **Price** \$68,000 + GST  
**Features** 3 Point Linkage, 3 x Remotes, 4 Cylinder Turbo Engine, A/C Cabin, Drawbar, Front Tyres 340/85R28, PTO, Rear Tyres 420/85R38

2022 CPCD30-M3H 3T DIESEL FORKLIFT | **Stock No.** 6/7872

**Make/Model** HELI / CPCD30-M3H      **Condition** New      **Location** Penrith, NSW  
**Hours** N/A      **Year** 2022      **Price** \$POA  
**Features** 1070mm Fork, 3 Hydraulic Valves With IHR, 3 Stage Full Free Mast, 3000KG Capacity, 4500MM Maximum Lifting Height, Hydraulic & Drive OPS, LED Beacon, Mitsubishi S4S Engine, Pneumatic Tyres, Side Shifter



2022 HELI CPCD35Y-W12 4WD ROUGH TERRAIN FORKLIFT | **Stock No.** 6/7869

**Make/Model** HELI / CPCD35Y-W12 4WD      **Condition** New      **Location** Penrith, NSW  
**Hours** N/A      **Year** 2022      **Price** \$POA  
**Features** 1070mm Fork, 3 Hydraulic Valves With IHR, 3 Stage Full Free Mast, 4350MM Lift Height, 4WD, Hydraulic & Drive OPS, LED Beacon, Pneumatic Tyres, Rough Terrain, Side Shifter



2022 HELI CPCD35Y-W12 4WD ROUGH TERRAIN FORKLIFT | **Stock No.** 6/7870

**Make/Model** HELI / CPCD35Y-W12 4WD      **Condition** New      **Location** Penrith, NSW  
**Hours** N/A      **Year** 2022      **Price** \$POA  
**Features** 1070mm Fork, 3 Hydraulic Valves With IHR, 3 Stage Full Free Mast, 4350MM Lift Height, 4WD, Hydraulic & Drive OPS, LED Beacon, Pneumatic Tyres, Rough Terrain, Side Shifter



2023 ISUZU FVZ240-300 6X4 SERVICE TRUCK C/W AES 7000 SERVICE MODULE | **Stock No.** **INCOMING**

**Make/Model** Isuzu / FVZ240-300      **Condition** New      **Location** Midland, WA  
**Hours** N/A      **Year** 2023      **Price** \$POA  
**Features** 1 x 10 -1 grease pump, 1 x 5 – 1 high volume oil pumps for gear oils, 1 x Atlas screw compressor, 1 x Battery Isolator, 1 x Jump start Receptacle, 1 x Starter Isolator, 2 x 3 – 1 high volume oil pumps for hydraulic and engine oils, 4x Husky double diaphragm pumps for Diesel 2", Waste 1", Water ¾ " & Coolant ¾ ", All fill points and easy to view internal site glasses located inside the reel cabinet and Diesel fill site Glasses external, Auto on Headlights, Banlaw fast fill fuel system c/w vent system to diesel tank, Beacons Fitted Front and rear, Compressor fueled from sub tank inside main diesel tank, DG3 Hi Vis Tape, Emergency Stops fitted 1 x inside and 1 x outside of Cab area, First aid and eyewash kits conveniently located in truck cabin, Graco 1½" hose reel for diesel, LED Whip Aerial, Lockable start isolators for remote compressor controls conveniently located drivers' side of the module at the reel cabinet, Reversing Camera, Safety Triangles, Six (6) service LED roof mounted

**WA Branch**

21 Military Road Midland WA 6056  
**Phone:** [1300 226 366](tel:1300226366)

**NSW Branch**

37 Jack Williams Drive Penrith NSW 2750  
**Phone:** [+61 429 084 569](tel:61429084569)

lights at rear, front and cabinet of the module for better operator vision and safety, Two 2 x 9kg DCP fire extinguishers accessible from ground level, UHF Radio, Wheel Chocks, Wheel Nut Indicators, 1/2" hose reels for coolant, air and water, 3/4" hose reels for oil delivery and waste suction



2022 REDLIFT CPCD35-XW33C-RT4 DIESEL ROUGH TERRAIN FORKLIFT | **Stock No.** 6/4WDRT 2022

<b>Make/Model</b> Redlift / CPCD35-XW33C-RT4	<b>Condition</b> Unused	<b>Location</b> Midland, WA
<b>Hours</b> 1	<b>Year</b> 2022	<b>Price</b> \$43,500 + GST

**Features** 1220mm Length Forks, 3,000mm Duplex Mast, 4WD, Automatic Transmission, High exhaust and dual air filters, Japanese Yanmar NE98 Engine, LED Lamps & Warning Light, Side Shift, Suspension Seat



2023 REDLIFT CPCD35-XW33C-RT4 DIESEL ROUGH TERRAIN FORKLIFT | **Stock No.** 6/4WDRT 2023

<b>Make/Model</b> Redlift / CPCD35-XW33C-RT4	<b>Condition</b> Unused	<b>Location</b> Midland, WA
<b>Hours</b> 1	<b>Year</b> 2023	<b>Price</b> \$45,000 + GST

**Features** 1220mm Length Forks, 3,000mm Duplex Mast, 4WD, Automatic Transmission, High exhaust and dual air filters, Japanese Yanmar NE98 Engine, LED Lamps & Warning Light, Side Shift, Suspension Seat



2023 ISUZU FVZ240-300 6X4 WATER TRUCK C/W AES 14000L WATER TANK | **Stock No.**

<b>Make/Model</b> Isuzu / FVZ240-300	<b>Condition</b> New	<b>Location</b> Hazelmere, WA
<b>Hours</b> N/A	<b>Year</b> 2023	<b>Price</b> \$POA

**Features** 1 set of Wheel Chocks and 1 set of Reflective Triangles, 1 basic first aid kit, 1 x Jump start Receptacle, 2 x E Stops, 80mm NB high lift Southern Cross water pump. Pressure outlets include a 25mm ball valve outlet for hose reel and 2" bsp ball valve, AES 14000 Water Truck Module c/w fully independent ROPS system designed and fabricated to ISO 3471 /3449 standards to suit cab over chassis., Auto on Headlights, Cannon: Air operated, mounted in rear right hand corner top remote controlled from cabin and grease point accessible from ground level, Dribble Day: 125mm full width gravity fed type with air operated butterfly valve controlled from cabin., Extend Hydraulic Tank Breather, fill point fitted with a 75mm male camlock and cap c/w manual butterfly valve, Fire Extinguisher: 9kg dry powder fitted to driver's side of tank with easy access from front of tank platform., Fit Larger Warning Light on Top of Dash to Show PTO Engaged, Full Width Bumper Incorporating LED Taillights & Clearance Lights, Hose Reel: Manual Rewind complete with 15m x 25mm hose and variable spray water faucet., Nut Tags to be Fitted to all Wheel Nuts, On Highway Fill Level, Reverse Camera, Starter & Battery Isolator, Supply & installation of a Hotshift PTO to suit a high lift water Pump. A Spin on type return line filter. A 200 litre oil tank will be integrated into the front left corner of the water tank., Supply and Fit Additional Fire Extinguisher at Rear of Truck, Tank Capacity 14,000 Litres, Three (3) magnum air operated spray heads. One left, one right and one central. All individually controlled from cabin, Top fill point funnel, drivers' side , site level gauges front and rear., Two (2) LED and two (2) work lights located at top corners of tank. Reverse alarm and reverse light fitted. Beacon fitted on ROPS & Rear of tank, UHF Radio, Whip Aerial to 4.2m

2024 ISUZU FVZ240-300 6X4 WATER TRUCK C/W AES 14000L WATER TANK | **Stock No.** 6/8623

<b>Make/Model</b> Isuzu / FVZ240-300	<b>Condition</b> New	<b>Location</b> Penrith, NSW
--------------------------------------	----------------------	------------------------------

**WA Branch**

21 Military Road Midland WA 6056  
**Phone:** [1300 226 366](tel:1300226366)

**NSW Branch**

37 Jack Williams Drive Penrith NSW 2750  
**Phone:** [+61 429 084 569](tel:6161429084569)




**Hours** 6

**Year** 2024

**Price** \$POA

**Features** 1 set of Wheel Chocks and 1 set of Reflective Triangles, 1 basic first aid kit, 1 x Jump start Receptacle, 2 x E Stops, 80mm NB high lift Southern Cross water pump. Pressure outlets include a 25mm ball valve outlet for hose reel and 2" bsp ball valve, AES 14000 Water Truck Module c/w fully independent ROPS system designed and fabricated to ISO 3471 /3449 standards to suit cab over chassis., Auto on Headlights, Cannon: Air operated, mounted in rear right hand corner top remote controlled from cabin and grease point accessible from ground level, Dribble Day: 125mm full width gravity fed type with air operated butterfly valve controlled from cabin., Extend Hydraulic Tank Breather, fill point fitted with a 75mm male camlock and cap c/w manual butterfly valve, Fire Extinguisher: 9kg dry powder fitted to driver's side of tank with easy access from front of tank platform., Fit Larger Warning Light on Top of Dash to Show PTO Engaged, Full Width Bumper Incorporating LED Taillights & Clearance Lights, Hose Reel: Manual Rewind complete with 15m x 25mm hose and variable spray water faucet., Nut Tags to be Fitted to all Wheel Nuts, On Highway Fill Level, Reverse Camera, Starter & Battery Isolator, Supply & installation of a Hotshift PTO to suit a high lift water Pump. A Spin on type return line filter. A 200 litre oil tank will be integrated into the front left corner of the water tank., Supply and Fit Additional Fire Extinguisher at Rear of Truck, Tank Capacity 14,000 Litres, Three (3) magnum air operated spray heads. One left, one right and one central. All individually controlled from cabin, Top fill point funnel, drivers' side , site level gauges front and rear., Two (2) LED and two (2) work lights located at top corners of tank. Reverse alarm and reverse light fitted. Beacon fitted on ROPS & Rear of tank, UHF Radio, Whip Aerial to 4.2m


 2022 ACTION TRI AXLE WATER TANKER TRAILER | **Stock No.** 6/Action

**Make/Model** Action / Tri Axle  
 Water Tanker Trailer

**Condition** New

**Location** Midland, WA

**Hours** N/A

**Year** 2022

**Price** \$POA

**Features** 10 Stud Rims, 11R22.5 Tyres, 3 x Fan Sprays, 33,000L Capacity, 50mm & 90mm King Pin, Dribble Bar, EBS Brakes, Eifel Pump, Spring Suspension


 LOADRITE MONITOR & PARTS | **Stock No.** 6/7118

**Make/Model** Loadrite / LP 950  
**Hours** N/A

**Condition** Used  
**Year** N/A

**Location** Midland, WA  
**Price** \$3,000 + GST

 CONTATORE ENGINEERING 1200MM ROCK BUCKET | **Stock No.** 6/7755

**Make/Model** Contatore Eng /  
 1200mm Rock Bucket

**Condition** Used

**Location** Midland, WA

**Hours** N/A

**Year** N/A

**Price** \$3,250 + GST

 CRANE FORKS (BRICK PACKS) | **Stock No.** 6/7758CON

**Make/Model** Crane Forks  
**Hours** N/A

**Condition** Used  
**Year** N/A

**Location** Midland, WA  
**Price** \$800 + GST

**WA Branch**

 21 Military Road Midland WA 6056  
**Phone:** [1300 226 366](tel:1300226366)
**NSW Branch**

 37 Jack Williams Drive Penrith NSW 2750  
**Phone:** [+61 429 084 569](tel:61429084569)



2007 FRAMO FIRE WATER SYSTEM (NOTE NEW/UNUSED) | **Stock No.** 6/8429

**Make/Model** Framo / Fire Water System  
**Condition** N/A  
**Location** Midland, WA  
**Hours** N/A  
**Year** 2007  
**Price** Call Today  
**Features** 5600Ltrs Diesel Fuel Tank, Nyborg A/C System, Rated Capacity 1550M3/H, Stk Pale Med Transformer



2011 CONTATORE ENGINEERING133 JIB TO SUIT 972 LOADER | **Stock No.** 6/4079

**Make/Model** Contatore Eng  
**Condition** Used  
**Location** Midland, WA  
**Hours** N/A  
**Year** N/A  
**Price** \$5,700 + GST



2021 REDLIFT FL25R-Y ELECTRIC FORKLIFT | **Stock No.** 6/ELECTRIC

**Make/Model** Redlift / FL25R-Y (3 Stage)  
**Condition** Unused  
**Location** Midland, WA  
**Hours** 6  
**Year** 2021  
**Price** \$28,900 + GST  
**Features** 1070mm Length Forks, 2500kg Capacity, 4500mm 3 Stage Mast, 80V202AH Lithium Battery & Charger, AC System, LED Lamps & Warning Light, Multi Function LCD Display, Pneumatic Tyres, Sideshift



1000MM EXCAVATION BUCKET TO SUIT 320D | **Stock No.** 6/7014

**Make/Model** Caterpillar / 1000mm Excavation Bucket  
**Condition** Used  
**Location** Penrith, NSW  
**Hours** N/A  
**Year** N/A  
**Price** \$6,000 + GST  
**Features** 310mm Between Bosses, 450mm Centres, 80MM Pins



2023 REDLIFT CPCD35H-490 DIESEL FORKLIFT | **Stock No.** 6/35DIESEL

**Make/Model** Redlift / CPCD35H-490  
**Condition** Unused  
**Location** Midland, WA  
**Hours** 3  
**Year** 2023  
**Price** \$24,000 + GST  
**Features** 1070mm Length Forks, 3 Stage Mast, 3500KG Lift Capacity, 4500mm Lift Height, Chinese Xinchai C490 Diesel Engine, Electronic Trans Shift,, Hydraulic Automatic Transmission, Pneumatic Tyres, Side Shift, Warning Light

**WA Branch**

21 Military Road Midland WA 6056  
**Phone:** [1300 226 366](tel:1300226366)

**NSW Branch**

37 Jack Williams Drive Penrith NSW 2750  
**Phone:** [+61 429 084 569](tel:61429084569)



773F CATERPILLAR TRAY | **Stock No.** 6/5601

**Make/Model** Caterpillar / 773F TRAY  
**Hours** N/A

**Condition** Used  
**Year** N/A

**Location** Midland, WA  
**Price** \$12,000 + GST



CATERPILLAR 740 TRAY | **Stock No.** 6/3912

**Make/Model** Caterpillar / 740 Tray  
**Hours** N/A  
**Features** Comes with Rams

**Condition** Used  
**Year** N/A

**Location** Midland, WA  
**Price** \$7,000 + GST



CATERPILLAR 773F TRAY | **Stock No.** 6/5600

**Make/Model** Caterpillar / 773F  
**Hours** N/A

**Condition** Used  
**Year** N/A

**Location** Midland, WA  
**Price** \$12,000 + GST



PD4 DIGGA AUGER DRIVE (COMES WITH 2 AUGER BITS) | **Stock No.** 6/5781

**Make/Model** Digga  
**Hours** N/A  
**Features** 400mm Auger Bit, 600mm Auger Bit

**Condition** Used  
**Year** N/A

**Location** Midland, WA  
**Price** \$3,250 + GST

**WA Branch**

21 Military Road Midland WA 6056  
**Phone:** [1300 226 366](tel:1300226366)

**NSW Branch**

37 Jack Williams Drive Penrith NSW 2750  
**Phone:** [+61 429 084 569](tel:+61429084569)